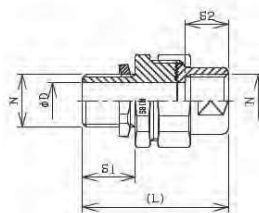


# 02 耐圧防爆構造ユニオンカップリング

## Flameproof Union Coupling

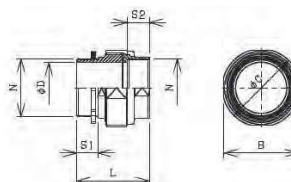
### SUM-16L~104L (オスねじ×メスねじ) 型



d2

工場電気設備防爆指針  
(ガス蒸気防爆2006)

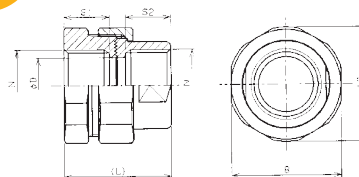
型式 Type	N	φD	S1	S2	B	φC	L	重量(kg) Weight
SUM-16L	PF 1/2	14.5	21	17	35	37	58	0.2
SUM-22L	PF 3/4	20.5	21	17	41	43	58	0.3
SUM-28L	PF 1	26.5	26	19	50	53	66	0.4
SUM-36L	PF 1-1/4	34.5	26	19	58	61	66	0.5
SUM-42L	PF 1-1/2	40	26	23	67	71	80	0.9
SUM-54L	PF 2	52	26	23	83	87	83	1.3



型式 Type	N	φD	S1	S2	B	φC	L	重量(kg) Weight
SUM-70L	PF 2-1/2	66	27	29	96	100	94	1.6
SUM-82L	PF 3	78	27	29	112	117	96	2.1
SUM-92L	PF 3-1/2	88	28	32	124	129	106	2.8
SUM-104L	PF 4	100	28	32	140	145	106	3.6

主材質 Material	鋼(ステンレス鋼も可) Steel (Stainless Steel is applied upon order)
表面処理 Surface Treatment	電気亜鉛メッキ Zn Electroplating

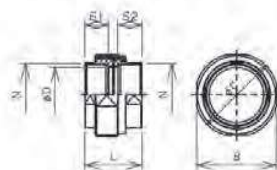
### SUF-16~104 (メスねじ×メスねじ) 型



d2

工場電気設備防爆指針  
(ガス蒸気防爆2006)

型式 Type	N	φD	S1	S2	B	φC	L	重量(kg) Weight
SUF-16	G 1/2	14.5	17	17	35	37	40	0.15
SUF-22	G 3/4	20.5	17	17	41	43	40	0.20
SUF-28	G 1	26.5	19	19	50	53	43	0.30
SUF-36	G 1-1/4	34.5	19	19	58	61	43	0.43
SUF-42	G 1-1/2	40	23	23	67	71	54	0.65
SUF-54	G 2	52	23	23	83	87	57	1.05



型式 Type	N	φD	S1	S2	B	φC	L	重量(kg) Weight
SUF-70	PF 2-1/2	66	28	29	96	100	69	1.1
SUF-82	PF-3	78	28	29	112	117	69	1.6
SUF-92	PF 3-1/2	88	33	32	124	129	78	2.0
SUF-104	PF 4	100	33	32	140	145	78	2.7

主材質 Material	鋼(ステンレス鋼も可) Steel (Stainless Steel is applied upon order)
表面処理 Surface Treatment	電気亜鉛メッキ Zn Electroplating